

INTEGRA

MUOVIHAKA OY



heelproof entrance mat with carpet inserts

Integra heel proof entrance mat combines performance and elegance together with its unique interlocking tiles and high performance carpet inserts. Integra is suitable for most demanding applications such as shopping centres, airports, subway stations and hotels.

Tiles have open grid yet heel proof construction. Distinctive of Integra tile is the combination of lamellas and carpet inserts creating alternating zones for scraping, cleaning and absorbing. Lamellas form the scraping and cleaning part of the tile and plain carpet inserts absorbing part of the tile.

Lamellas of tile remove grit and fibres of insert remove dust and absorb moisture. The steady rhythm of lamellas and plain carpet areas yields a unique design effect of Integra.



Integra tiles have open grid yet heel proof construction.

MUOVIHAKA OY

Kuusimäentie 12, 01900 Nurmijärvi, FINLAND

Tel: +358 9 290 22 20

info@muovihaka.com

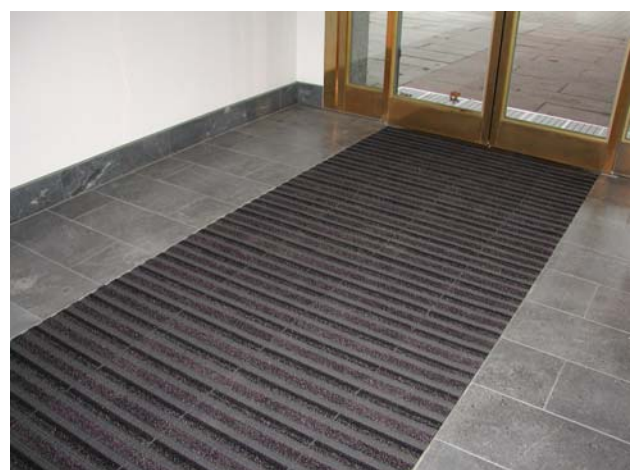
Fax: +358 9 250 48 07

www.muovihaka.com

MUOVIHAKA OY

INTEGRA

MH MUOVIHAKA OY



MUOVIHAKA OY

Kuusimäentie 12, 01900 Nurmijärvi, FINLAND

Tel: +358 9 290 22 20

info@muovihaka.com

Fax: +358 9 250 48 07

www.muovihaka.com

MH MUOVIHAKA OY

Interlocking modular tiles

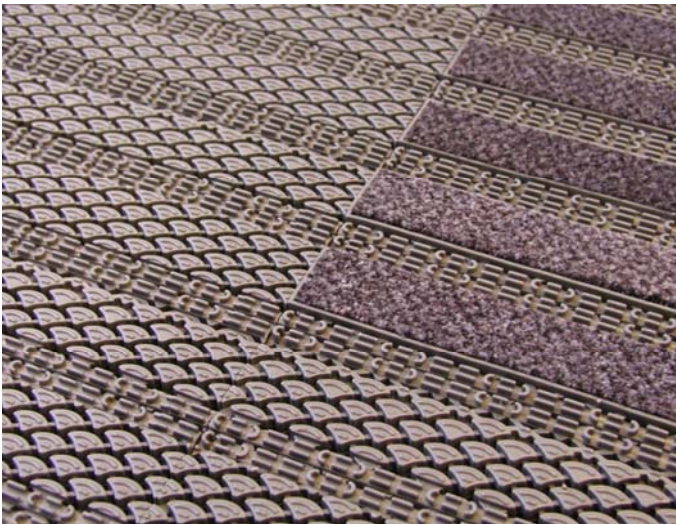
Integra tiles are very easy to cut to size and shape. Tiles can be installed in minutes, without the use of special tools. Interlocking modular tiles allow you to create an entrance mat of any length and width.

Easy maintenance

Integra entrance mat is inexpensive to clean by vacuum cleaning or hosing down. Integra is easy to roll up for maintenance. Dirt that falls through the mat can be simply vacuum cleaned from the floor underneath.

Good drainage and non-slip surface

Integra has slip resistant surface pattern and it offers maximum drainage. Open grid construction allows water to pass through the mat, providing safe and dry surface.



Combo heel proof interlocking tile is fully compatible with the Integra carpet tile.



Insert colours are graphite, blue and red.

SPECIFICATIONS:	
Tile material:	UV-shielded vinyl. Resists most chemicals and oils.
Tile size:	400 x 140 mm
Packaging:	20 tiles / box (approx. 1 m ²)
Height:	16 mm
Weight:	11 kg / m ²
Temperature resistance:	-20°C - +70°C
Tile colour:	dark grey
Insert pile material:	100 % polyamide
Insert colours:	graphite, blue, red



INTEGRA

heelproof entrance mat with carpet inserts

Accessories:

Plastic edging 16 mm

Integra plastic edging is specially designed for surface mounted applications on finished floor surfaces and for indoor and outdoor conditions.

Material: UV-resistant PP/rubber

Length: 300 cm

Height: 16 mm

Weight: 290 g / m

Colour: grey



Aluminium edging 16/20 mm

The bevelled surface of the edging minimizes the possibility of tripping and allows use of wheeled carts. It withstands heavy loads and is suitable for heavy wheeled traffic.

Material: anodised aluminium.

Height: 18 mm

Length: 300 cm

Weight: 460 g/m



Integra anchors

Integra installation anchors are used to secure sections of mats to floor. If there is a risk that entrance mats might move due to heavy foot or trolley traffic, installation anchors prevent mats from moving and sliding around.

Material: nylon

Height: 16 mm

Colours: grey

Ø 15 mm

